		Tesla, Inc. Service Bulletin		Rework Off Road Lightbar	
SB-25-90-001 April 7, 2026		R3			
Classification		Section/Group		Mobile Service	Configuration
Recall Bulletin		90 - Accessories		Can Perform (where permitted)	All
Model	Model Year	Country/Region		Build Location	
Cybertruck	All	North America		Giga Texas	
The model(s) and model year(s) listed are a general approximation of the affected VIN list. Refer to the VIN/Bulletin Tracker or Customer/Vehicle profile to determine applicability of this bulletin for a particular vehicle.					

Recall Bulletin: Recall Bulletins are mandatory service procedures that, unless they can be completed via a software update that a customer installs through the normal course of ownership, must be carried out by Tesla-certified Service Centers. Recall work performed by uncertified technicians could lead to unsafe conditions or voided warranty provisions.

This Service Document supersedes SB-25-90-001 R2, dated March 4, 2026. This new revision, R3, updates the parts required and special tools. Each content change is marked by a vertical line in the left margin. Discard the previous version and replace it with this one.

Condition

On certain vehicles, the service-installed optional off road lightbar accessory may be improperly adhered to the windshield due to incorrect primer application, which may result in separation of the lightbar.

Correction

Inspect and replace or rework the off road lightbar. Tesla employees are not permitted to connect or assist with the RH B-pillar connection of the off road lightbar harness to the roof accessory jumper harness connector. Tesla employees are not permitted to remove the blackout film tape from replacement off road lightbars.

⚠ WARNING: Tesla employees are not permitted to connect or assist with the RH B-pillar connection of the Cybertruck off road lightbar harness to the roof accessory jumper harness connector. Only the customer or a third-party entity is permitted to complete the lightbar harness connection. Refer the customer to [CD-24-90-001](#), “Cybertruck Off Road Lightbar Harness Connection” for the lightbar harness connection instructions.

📄 NOTE: The procedure for reworking the off road lightbar must be performed on all lightbars, regardless of any observed damage or delamination from the windshield.

Correction Description	Correction	Time
Inspect And Replace Off Road Lightbar; Rework Replacement Lightbar	S012590001	1.50
Inspect And Replace Off Road Lightbar; Rework Replacement Lightbar And LH Roof Applique Tabs	S022590001	1.50
Inspect And Replace Off Road Lightbar; Rework Replacement Lightbar, LH Roof Applique Tabs, And RH Roof Applique Center Bracket Channels	S032590001	1.62
Inspect And Replace Off Road Lightbar; Rework Replacement Lightbar And One Roof Applique Center Bracket Channels	S042590001	1.62
Inspect And Replace Off Road Lightbar; Rework Replacement Lightbar And Both Roof Appliques Center Bracket Channels	S052590001	1.74
Inspect And Rework Off Road Lightbar	S062590001	0.96
Inspect And Rework Off Road Lightbar; Rework LH Roof Applique Tabs	S072590001	1.02

Inspect And Rework Off Road Lightbar; Rework LH Roof Applique Tabs And RH Roof Applique Center Bracket Channels	S082590001	1.14
Inspect And Rework Off Road Lightbar; Rework One Roof Applique Center Bracket Channels	S092590001	1.08
Inspect And Rework Off Road Lightbar; Rework Both Roof Appliques Center Bracket Channels	S102590001	1.20

	Part Number	Description	Quantity
Parts Required	2287304-00-A	3M 4298 ADHESION PROMOTER PACKET	4
	2275529-00-A	BLT, FCS, M4x8, [088], G1009[B]	4
	2267108-00-A	LH OFFROAD LAMP BRACKET w PAD	1
	2267110-00-A	LH OFFROAD LAMP ENDCAP	1
	2267112-00-A	OFFROAD LAMP FRONT TAPE ADHESIVE, 3M PT1500	1
	2267114-00-A	OFFROAD LAMP REAR TAPE ADHESIVE, 3M PT1500	2
	2267109-00-A	RH OFFROAD LAMP BRACKET w PAD	1
	2267111-00-A	RH OFFROAD LAMP ENDCAP	1
	2278818-00-A	RIVNUT, M6, 0.5-3.0G, [8], G1009, CL, P15	2
	1012740-00-A	SCR, M6-1x16, TRUSSHEAD, STL, ZINI, PATCH	2
If Necessary	1937354-30-A	OFF ROAD LIGHTBAR, V3, CYBERTRUCK	1
<p>These part numbers were current at the time of publication. Use the revisions listed or later, unless otherwise specified in the Parts Catalog.</p>			
Special Tools	1080601-00-A	BTB WINGED SCRAPER SET	
	1126459-00-A	CENTER PUNCH, SPRING LOADED	
	1706471-00-A	DREMEL ACCESSORY KIT - 110 PIECE	
	1115232-00-B	GAUGE, BRAKE PAD DEPTH, 8PC	
	1126494-00-A	SET, DRILL BIT, 1-13MM (9MM CARBIDE DRILL BIT)	
	1496450-00-A	STEP DRILL BIT, UP TO 28MM DIA	
	1810149-00-A	THREADED NUT SETTER KIT, M4-M12	
	1453179-00-A	TOOL, KIT, CORDLESS LITHIUM-ION ROTARY, M12	
Shop Supplies	—	Isopropyl Alcohol (IPA) Wipes	
	1898302-00-A	Paint Pen	
	1953251-00-A	Self-Etching Primer Green, Sem, Se39693	
	—	Shop Vacuum	
	1099760-00-A	Tesla Cutting Lube 4 Oz	

Procedure

⚠ WARNING: Tesla employees are not permitted to connect or assist with the RH B-pillar connection of the Cybertruck off road lightbar harness to the roof accessory jumper harness connector. Only the customer or a third-party entity is permitted to complete the lightbar harness connection. Refer the customer to [CD-24-90-001](#), “Cybertruck Off Road Lightbar Harness Connection” for the lightbar harness connection instructions.

📄 NOTE: The Tesla Lightbar for Cybertruck is designed only for off road use. Tesla by law cannot install the lightbar electronics and/or configure the vehicle for lightbar control.

1. Inspect the off road lightbar for signs of damage or delamination from the windshield.
 - If damage is observed, replace the off road lightbar (refer to Service Manual procedure [61010002](#)), and then skip to step 2. **Do not reinstall the LH and RH roof appliques after the replacement lightbar is installed on the windshield.**
2. Remove the LH and RH roof appliques (refer to Service Manual procedure [1220035221](#)).
3. Inspect the LH and RH roof applique part numbers to determine next steps (Figures 1 and 2).

📄 NOTE: Take note of all necessary rework for the LH and/or RH roof applique(s) before proceeding to the rework sections outlined in this document.



Figure 1 – LH roof applique shown; RH similar



Figure 2 – LH roof applique shown; RH similar

- If the LH roof applique part number is **1974670-99-A** or **1974670-00-A**, rework the applique tabs (x2); see the [“Rework LH Roof Applique Tabs”](#) section.
- If the LH roof applique part number is **1816592-00-B** or earlier, rework the applique center bracket channels (x4); see the [“Rework LH/RH Roof Applique Center Bracket Channels”](#) section.
- If the RH roof applique part number is **1816593-00-B** or earlier, rework the applique center bracket channels (x4); see the [“Rework LH/RH Roof Applique Center Bracket Channels”](#) section.
- If the LH and RH roof appliques have already been reworked, skip to the [“Rework Off Road Lightbar”](#) section.

Rework LH Roof Applique Tabs

⚠ WARNING: Wear appropriate Personal Protective Equipment (PPE) including cut-resistant gloves and safety glasses when performing this procedure.

1. Position the LH roof applique on a soft surface to avoid damaging the applique and prepare the rework area.
2. Identify the LH roof applique tabs (x2) that require rework (Figures 3–5).

NOTE: The tabs are positioned closest to the applique seal at both ends of the applique.



Figure 3



Figure 4



Figure 5

3. Set the rotary tool speed to the lowest setting, unlock the collet, install a screw mandrel drill bit into the rotary tool, and then lock the collet to secure the drill bit in place (Figure 6).

⚠ CAUTION: Make sure that the drill bit extends out of the collet enough to drill through the full length of the tabs without the collet making contact with the flat surface of the applique.

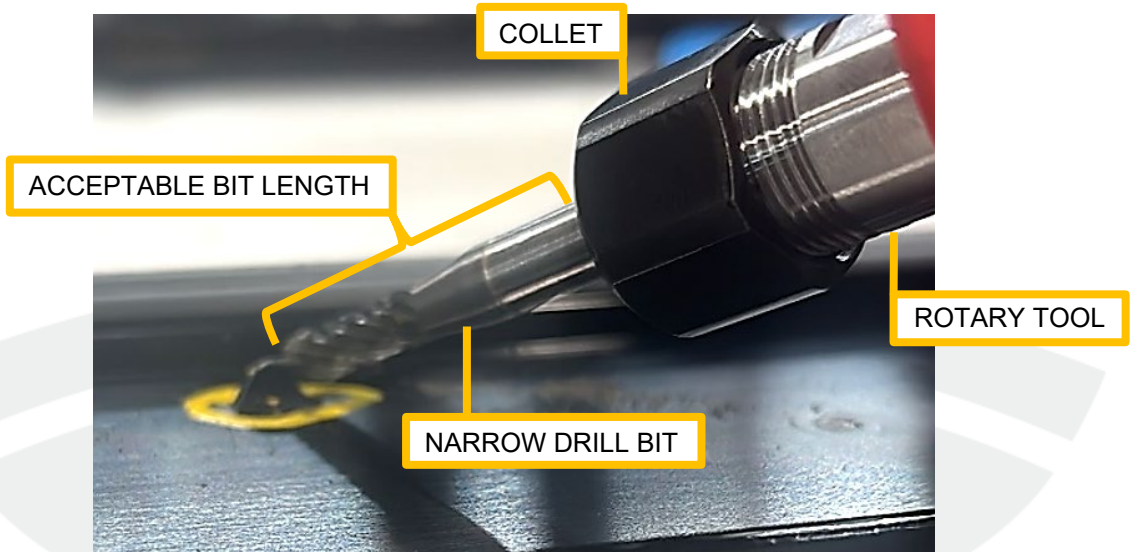


Figure 6

4. Use the rotary tool to drill and remove the LH roof applique tabs (x2) (Figures 7 and 8).

⚠ CAUTION: Do not press the narrow drill bit into the flat surface of the applique.

⚠ CAUTION: Make sure that the tabs are completely removed and both rework areas are flush with the flat surface of the applique.

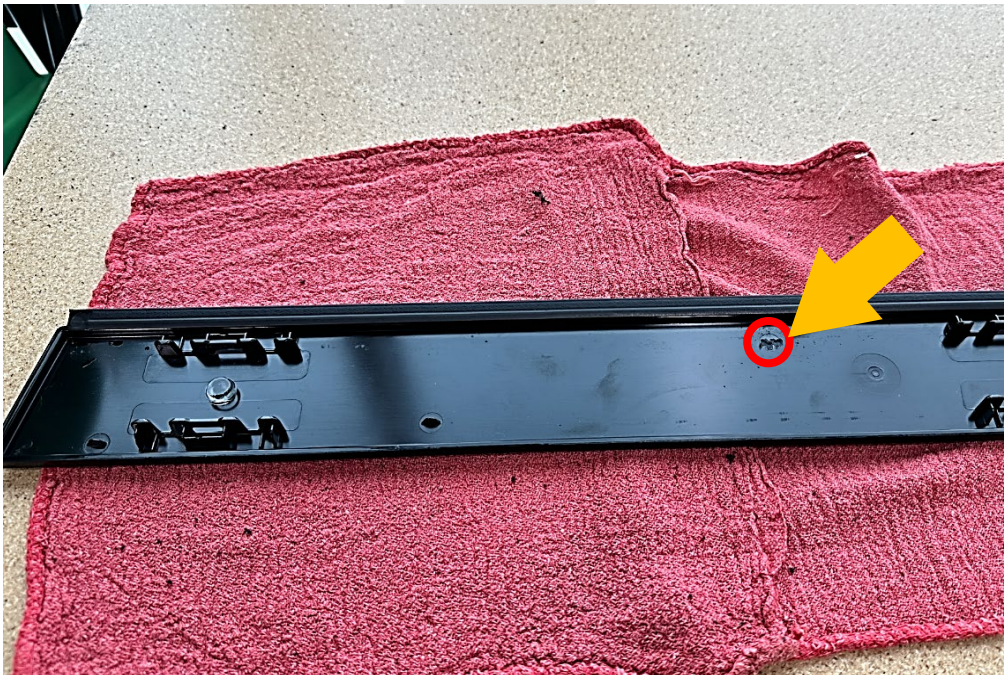


Figure 7



Figure 8

5. Clean any debris from the LH roof applique and rework area as required.
6. If performed, take note of the LH roof applique tabs (x2) rework to account for labor performed, and then continue to the [“Rework LH/RH Roof Applique Center Bracket Channels”](#) section or skip to the [“Rework Off Road Lightbar”](#) section as required.

Rework LH/RH Roof Applique Center Bracket Channels

⚠ WARNING: Wear appropriate PPE including cut-resistant gloves and safety glasses when performing this procedure.

📄 NOTE: The procedure for reworking the LH and RH roof applique center bracket channels is identical.

1. Position the LH roof applique on a soft surface to avoid damaging the applique and prepare the rework area.
2. Identify the LH roof applique center bracket channels (x4) that require rework (Figure 9).

📄 NOTE: The center bracket channels have narrower grooves compared to all other applique tabs.



Figure 9

3. Set the rotary tool speed to the lowest setting, unlock the collet, install a 5 mm grinding bit into the rotary tool, and then lock the collet to secure the drill bit in place (Figure 10).

⚠ CAUTION: Make sure that the grinding bit extends out of the collet enough to drill through the full length of the center bracket channels without the collet making contact with the bracket.

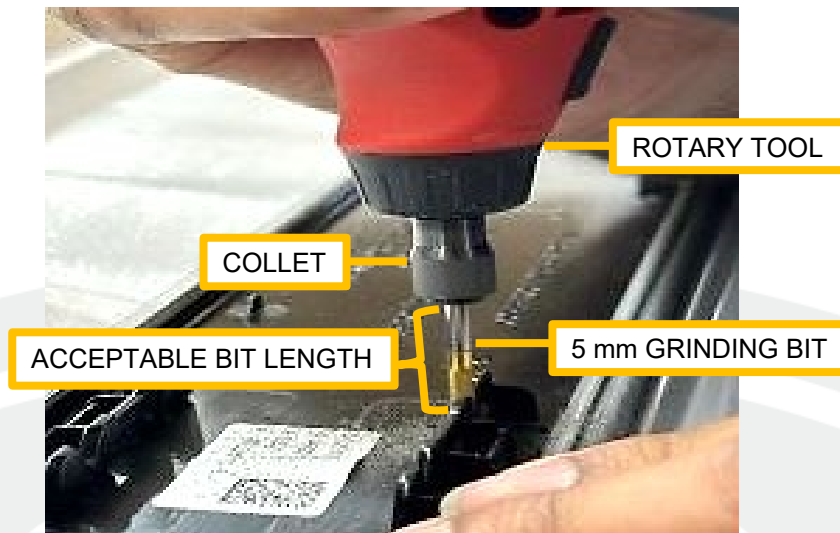


Figure 10

4. Use the rotary tool to drill through and widen the LH roof applique center bracket channels (x4) to approximately 5 mm (Figure 11).

⚠ CAUTION: Do not press the grinding bit into the flat surface of the applique.

⚠ CAUTION: Make sure that the new channel openings are flush with the flat surface of the applique.



Figure 11

5. Use a 5 mm depth gauge to confirm that the LH roof applique center bracket channels (x4) are within the 5 mm width specification (Figure 12). If necessary, repeat the previous step until the bracket channels are within specification.



Figure 12

6. Use IPA wipes and a shop vacuum to clean any debris from the LH roof applique and rework area as required. Allow 1 minute of dry time.
7. If the RH roof applique center bracket channels (x4) need to be reworked, repeat steps 1 through 6 in the [“Rework LH/RH Roof Applique Center Bracket Channels”](#) section.
8. Take note of the LH and/or RH roof applique center bracket channels rework to account for labor performed, and then continue to the [“Rework Off Road Lightbar”](#) section.

Rework Off Road Lightbar

⚠ WARNING: Wear appropriate PPE including cut-resistant gloves and safety glasses when performing this procedure.


1. Place ballast bags (x2) on the RH side of the vehicle’s roof to prepare the off road lightbar rework area (Figure 13).

📄 NOTE: The ballast bags are meant to secure the lightbar in place and protect the roof glass from damage. The lightbar should **NOT** be disconnected and must be reworked while still connected.



Figure 13

2. Prepare the T-handles (x2) and square wire kit as required (Figure 14).

 **NOTE:** Cut the desired length of wire and then secure the wire onto the T-handles.

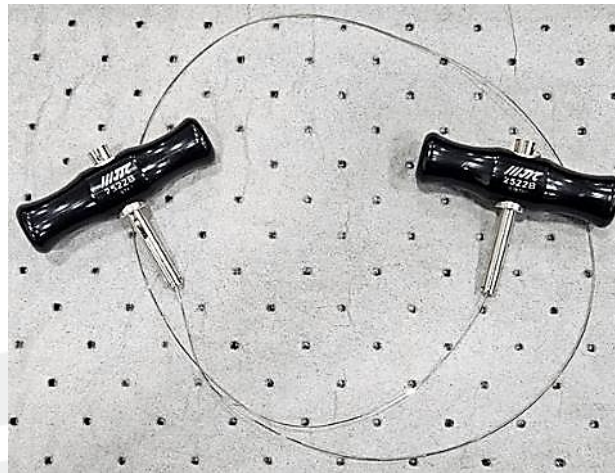


Figure 14

3. With assistance, use the T-handles (x2) and square wire kit to carefully remove the off road lightbar from the windshield, and then remove the lightbar from the vehicle (Figures 15–17).


 **CAUTION:** Do not damage the windshield or the lightbar harness during removal. Start the wire kit on the RH (passenger) side of the lightbar to avoid damaging the harness.



Figure 15



Figure 16



Figure 17

4. Place the off road lightbar on the ballast bags (x2) with the bottom side facing upwards (Figure 18).

⚠ CAUTION: Do not damage, disconnect, or apply excessive force to the lightbar.

📄 NOTE: The rework on non-damaged lightbars must be performed with the lightbar still electrically connected to avoid having the customer needing to reconnect the lightbar.



Figure 18

5. Use a winged scraper set to carefully remove all urethane from the upper exterior portion of the windshield (Figure 19).

⚠ CAUTION: Do not damage the windshield during urethane removal.

📄 NOTE: Cut the urethane flush with the windshield surface.

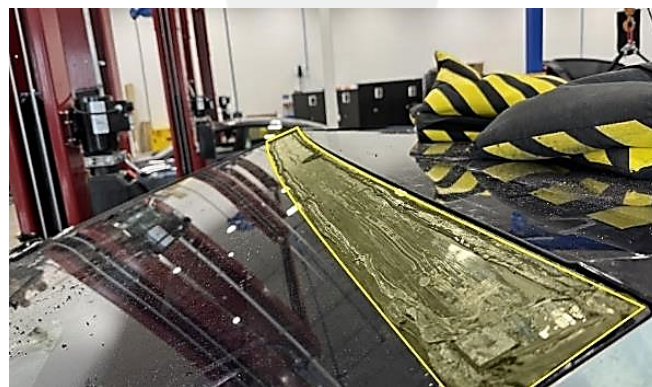


Figure 19

6. Use IPA wipes to clean the upper exterior portion of the windshield (Figure 20). Allow 1 minute of dry time.

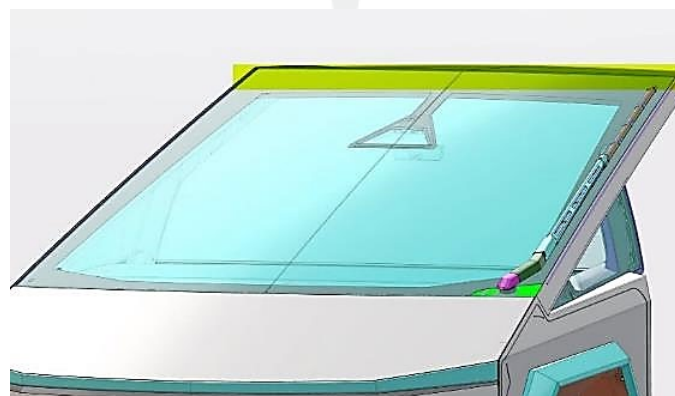


Figure 20
TESLA

7. Place shop towels around the off road lightbar rework area on the roof of the vehicle to prevent debris and contaminants from entering the RH roof applique channel when removing urethane from the lightbar.
8. Use a winged scraper set to carefully remove all urethane from the off road lightbar (Figure 21).

⚠ CAUTION: Do not damage the lightbar during urethane removal.



Figure 21

9. Use a shop vacuum to remove all debris and contaminants from the off road lightbar rework area.
10. Dry fit the off road lightbar on the windshield, and then apply masking tape along the lower portion of the lightbar to create a perimeter across the windshield (Figure 22).

📄 NOTE: Make sure that the lightbar is properly aligned on the windshield before applying the masking tape.

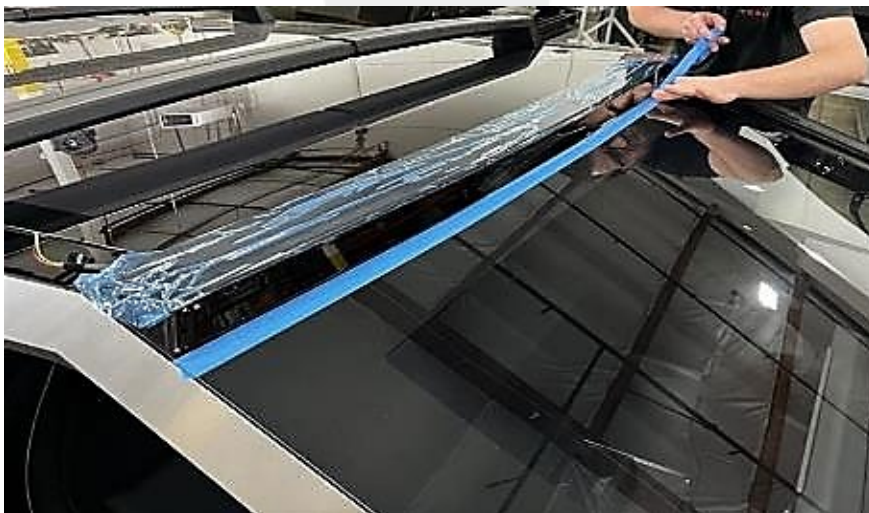


Figure 22

11. Remove the lightbar from the windshield after the masking tape is applied, and then place the lightbar on the ballast bags (x2).

12. Apply 3M 4298 adhesive promoter to the windshield on the entire perimeter of the lightbar surface area (Figure 23).

NOTE: All bonding surfaces must be free of impurities (dirt, dust, water, oil, grease, release agent or similar contaminants).

NOTE: Use one adhesive promoter wipe on each perimeter section of the lightbar surface area to ensure there is sufficient wetting of the adhesive promoter.

NOTE: Allow the adhesive promoter to dry for at least 1 minute before proceeding to the next step.

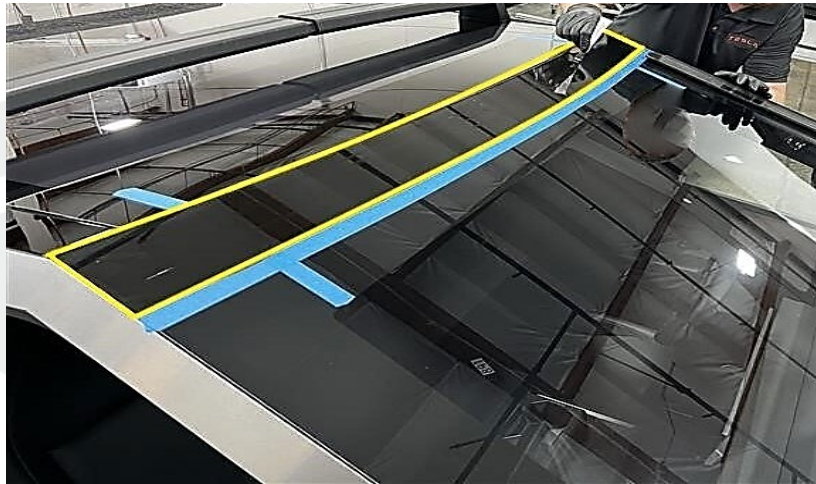


Figure 23

13. Prepare the off road lightbar.

- a. Use IPA wipes to clean the entire lightbar mating surface. Allow 1 minute of dry time.
- b. Apply 3M 4298 adhesive promoter to the lightbar on the entire perimeter of the lightbar (Figure 24).

NOTE: All bonding surfaces must be free of impurities (dirt, dust, water, oil, grease, release agent or similar contaminants).

NOTE: Allow the adhesive promoter to dry for at least 1 minute before proceeding to the next step.



Figure 24

c. Apply the double-sided tape to the off road lightbar as shown in Figure 25.

⚠ CAUTION: Do not fully remove the adhesive backing from the double-sided tape at this time.

📄 NOTE: The double-sided tape must be applied evenly across the front and rear edges of the lightbar. Do not cover the rear edge center hole of the lightbar with tape (yellow area).

- i. **For 2267112-00-A tape:** Peel back a small section of the adhesive backing from the RH outer edge of the tape, and then fold and crease the adhesive backing towards the front of the lightbar to create a tab (blue area) that will be used to fully remove the adhesive backing from the tape at a later step.
- ii. **For 2267114-00-A tape (x2):** Peel back a small section of the adhesive backing from the outer edges of both strips of tape, and then fold and crease the adhesive backing towards the rear of the lightbar to create tabs (blue and green areas) that will be used to fully remove the adhesive backing from the tape at a later step.

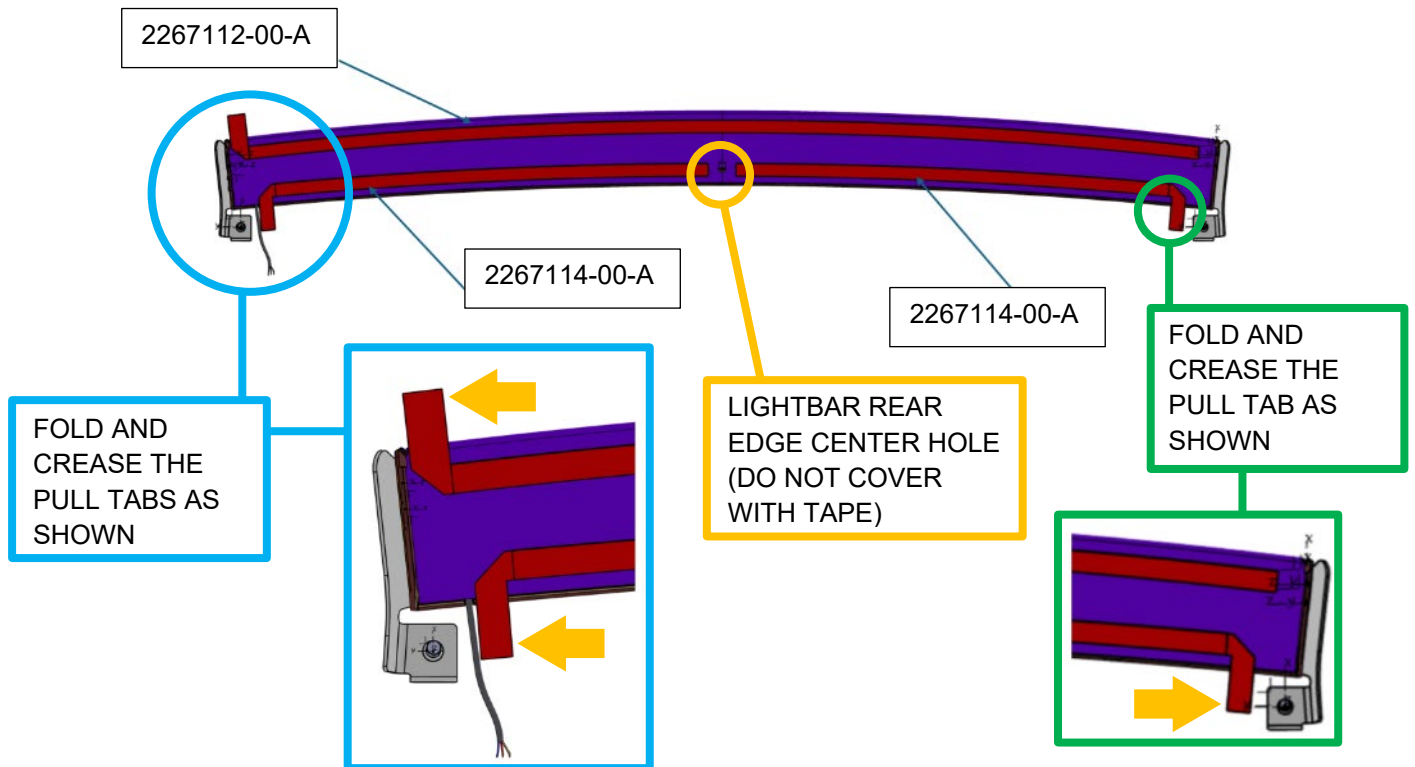


Figure 25 – Off road lightbar underside view and double-sided tape locations

d. Use a pressure roller to help adhere the double-sided tape to the off road lightbar (Figure 26).



Figure 26

14. With assistance, align the upper portion of the lightbar with the upper exterior portion of the windshield, and then position the lightbar evenly on the windshield (Figures 27 and 28).


 **NOTE:** Make sure that the double-sided tape adhesive backing tabs (Figure 25) established previously are exposed when the lightbar is positioned on the windshield.



Figure 27



Figure 28

15. Remove the ballast bags (x2) from the RH side of the vehicle's roof.

16. Release the tabs (x6) that attach the off road lightbar RH end cap cover to the lightbar, and then remove the end cap cover from the vehicle (Figures 29–31).

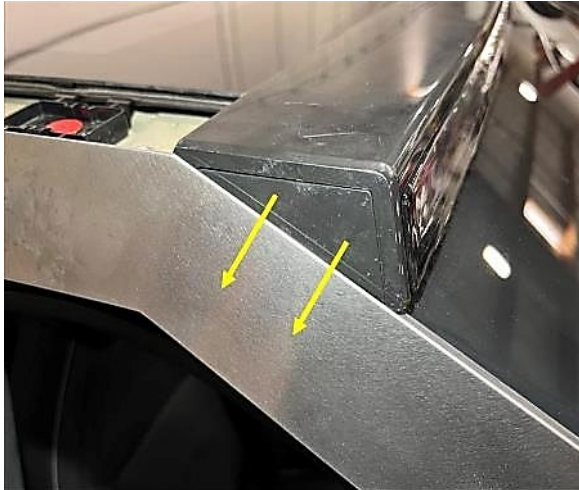


Figure 29 – Lightbar RH end cap cover shown; LH similar



Figure 30



Figure 31

17. Insert the tab on the RH aluminum end cap into the front of the off road lightbar, and then install the end cap on the lightbar (Figures 32 and 33).



Figure 32 – RH aluminum end cap shown; LH similar



Figure 33

18. With assistance, position the RH body bracket on the vehicle, and then install the bolts (x2, T20 2.5 Nm) that attach the body bracket to the lightbar (Figures 34–36).



Figure 34 – RH body bracket shown; LH similar

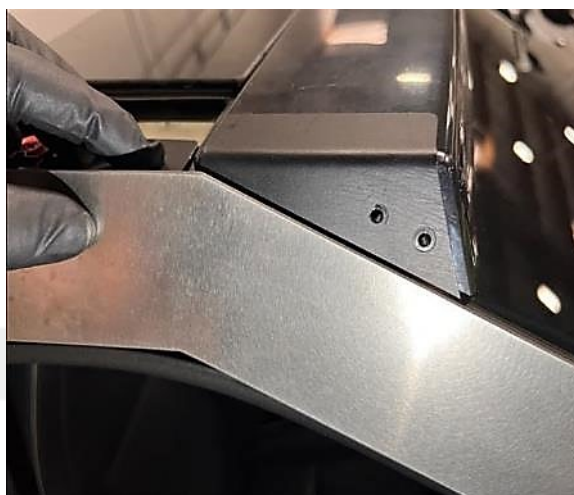


Figure 35



Figure 36

19. Use a paint pen to mark the RH body bracket hole location on the roof of the vehicle to prepare for the rivnut installation (Figure 37).

⚠ CAUTION: Do not crush or apply excessive pressure to the lightbar while positioning the bracket on the roof of the vehicle.

📄 NOTE: The bracket must be properly aligned on the lightbar and the roof of the vehicle.

📄 NOTE: With assistance, adjust the lightbar as necessary until the bracket attachment face is flush with the roof of the vehicle; if it is not flush, reposition the bracket as required.



Figure 37

20. Remove the bolts (x2) that attach the RH body bracket to the lightbar, and then remove the body bracket from the vehicle (Figures 34–36).

21. Prepare to drill a 9 mm hole in the roof of the vehicle at the location indicated by the paint pen marked previously.

a. Use a center punch to identify and mark the center of the paint pen mark (Figures 38 and 39).



Figure 38

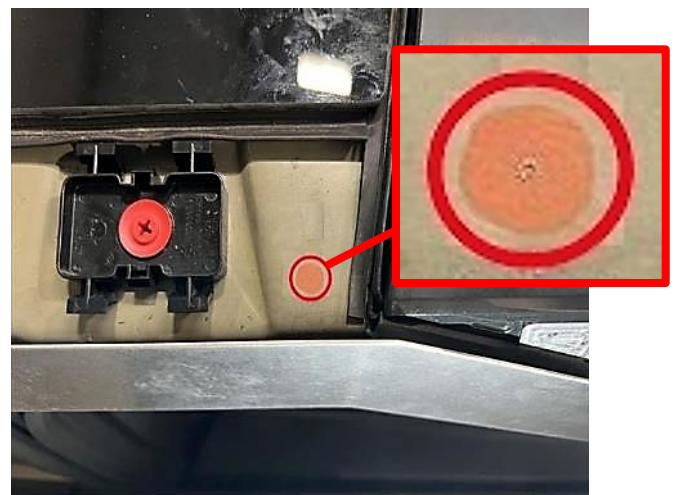


Figure 39

- b. Apply a small amount of cutting lube to the location indicated by the paint pen and center punch marked previously.
- c. Use a drill bit stop collar or apply masking tape to the 9 mm carbide drill bit to set the drill bit depth to approximately ½ inch (Figure 40).



Figure 40

- 22. Apply masking tape around the off road lightbar rework area (Figure 41).



Figure 41

- a. Carefully drill a pilot hole at the location indicated by the paint pen and center punch marked previously, and then proceed with drilling the full 9 mm hole in the roof of the vehicle (Figure 42).

⚠ CAUTION: Do not use excessive force when drilling into the roof of the vehicle.

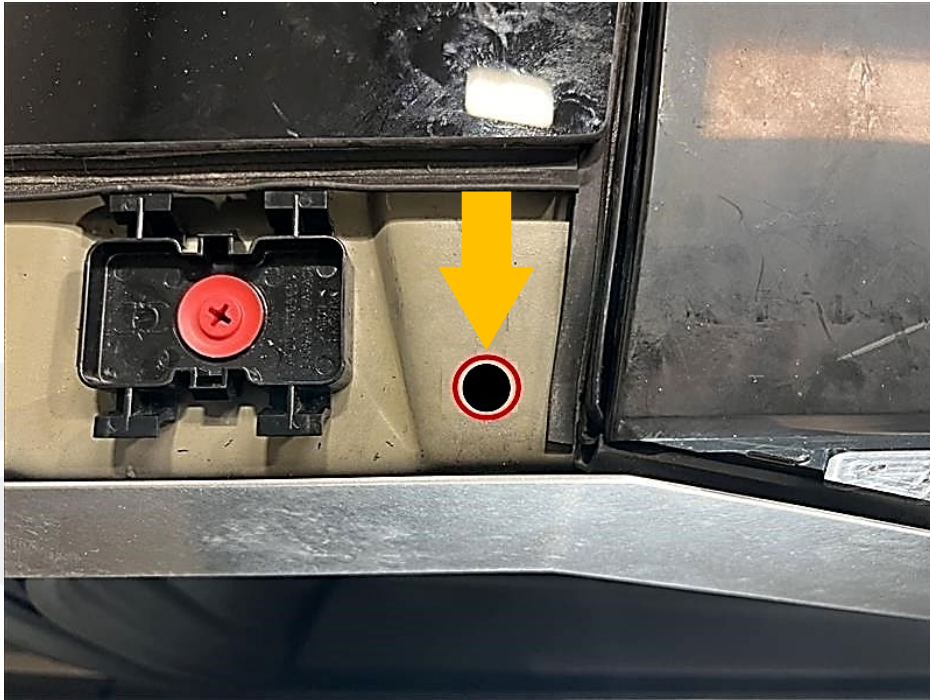


Figure 42 – Masking tape around the rework area shown removed for clarity

- b. Use a shop vacuum to remove all debris and contaminants from the drilling area, and then use IPA wipes to thoroughly clean the drilling area. Allow 1 minute dry time (Figure 43).



Figure 43

23. Apply a coat of Self-Etching Primer (SEM) to the off road lightbar rework area. Allow the primer to fully dry before proceeding to the next step (Figure 44).



Figure 44

24. Remove the masking tape from the off road lightbar rework area.
25. Use a threaded nut setter kit to install a closed-end sealing rivnut in the off road lightbar rework area (Figures 45 and 46).

⚠ CAUTION: Make sure that the rivnut is aligned and properly positioned in the off road lightbar rework area. Carefully apply downward pressure on the rivnut tool until the rivnut is fully seated into place.

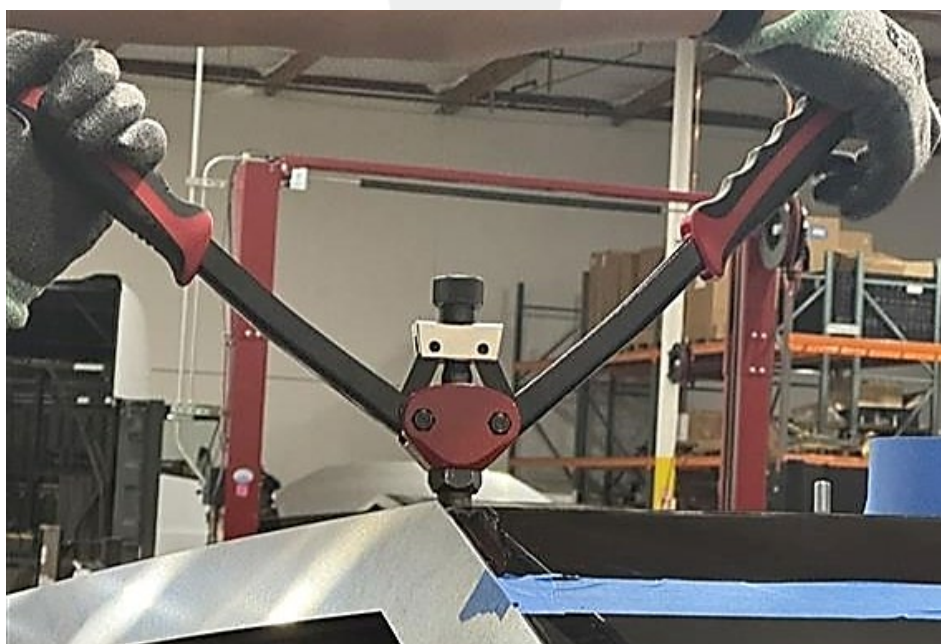


Figure 45

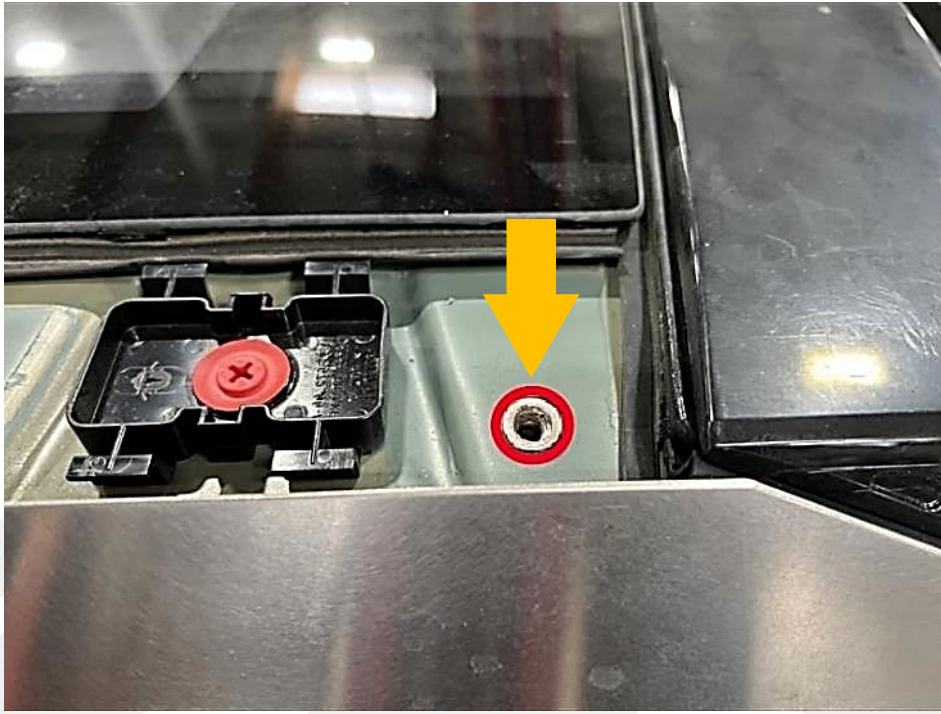


Figure 46

26. Position the RH body bracket on the vehicle, and then install the bolts (x2, T20, 2.5 Nm) that attach the body bracket to the lightbar (Figures 34–36).
27. Install the bolt (T30, 7 Nm) that attaches the RH body bracket to the roof of the vehicle (Figure 47).



Figure 47

28. Repeat steps 16 through 27 in the [“Rework Off Road Lightbar”](#) section for the LH side of the off road lightbar.

29. Pull the double-sided tape adhesive backing tabs (Figure 25) to fully remove the adhesive backing from the tape and expose the adhesive surfaces of the tape (Figures 48 and 49).

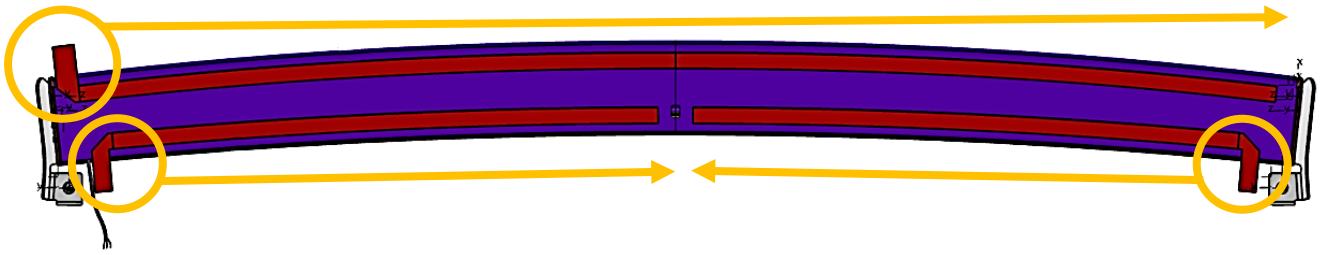


Figure 48



Figure 49 – Lightbar front edge double-sided tape removal shown; Rear edge tape removal similar

30. Starting at the center of the off road lightbar, firmly press the lightbar down against the windshield and proceed to extend outward on both the LH and RH sides of the lightbar to ensure proper adhesion of the double-sided tape.
31. Make sure that the off road lightbar harness is properly routed into the vehicle as required to prevent pinching or rubbing when the RH roof applique is reinstalled. If necessary, use harness tape to secure the harness to the vehicle (Figure 50).

⚠ CAUTION: Make sure that the harness is adequately supported or restrained to prevent future damage.



Figure 50

32. Install the LH and RH roof appliques (refer to Service Manual procedure [1220035221](#)).
33. Close out this document using the appropriate correction code based on the repair(s) performed.
- SB-25-90-001 R3