



Tesla, Inc.
Service Bulletin

Rework Spoiler Outer Panel

SB-25-11-007

October 31, 2025

Classification		Section/Group	Mobile Service	Configuration
Repair Bulletin		11 - Closures	Can Perform (where permitted)	All
Model	Model Year	Country/Region	Build Location	
Model Y	2025	Europe	Giga Berlin	

The model(s) and model year(s) listed are a general approximation of the affected VIN list. Refer to the VIN/Bulletin Tracker or Customer/Vehicle profile to determine applicability of this bulletin for a particular vehicle.


Repair Bulletin: This repair bulletin provides instructions on addressing a possible customer concern regarding the operation of Tesla vehicles. These instructions should only be performed by trained professionals.

Condition

On certain Model Y vehicles built at Giga Berlin, a gap between the liftgate and the spoiler outer panel may produce a whistling sound if the vehicle is driven at high speed.

Correction

Upon customer complaint of noise coming from the liftgate area, rework the spoiler outer panel.

 **NOTE:** If this bulletin is applicable to the vehicle, perform the correction without any need for inspection.

Correction Description	Correction	Time
Rework Spoiler Outer Panel	S012511007	0.36

Part Number	Description
Shop Supplies 1832735-00-A	Tape, Vehicle Sealing Isopropyl Alcohol (IPA) wipes

This part number was current at the time of publication. Use the revision listed or later, unless otherwise specified in the [Parts Catalog](#).

Procedure

1. Remove the spoiler outer panel (refer to Service Manual procedure [1133050502](#)).
2. Clean the LH and RH edges of the liftgate with IPA wipes, and then allow 1 minute to dry (Figure 1).

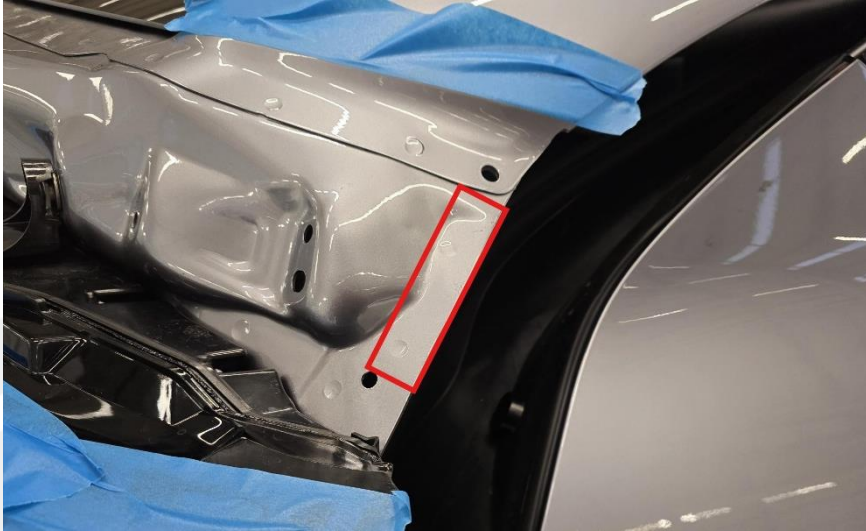


Figure 1 – RH shown, LH similar.

3. Prepare two pieces of tape. Cut the tape at a length of 9,5cm (3.75in).
4. Apply the pieces of tape (x2) on the LH and RH edges of the liftgate, leaving a gap of 5mm from the edge of the liftgate (Figure 2).

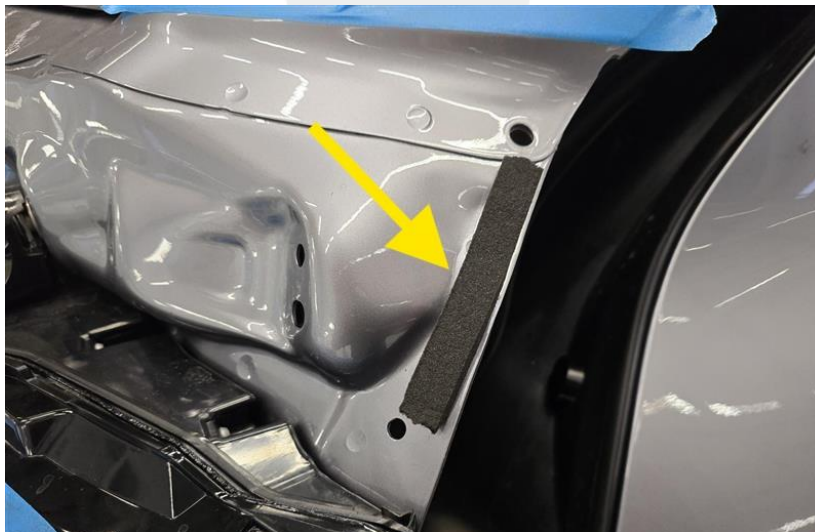


Figure 2 – RH shown, LH similar.

5. Install the spoiler outer panel (refer to Service Manual procedure [1133050502](#)).