



**Tesla, Inc.**  
**Service Bulletin**

# Adjust Charge Port

**SB-24-44-001**  
March 20, 2024

Classification		Section/Group	Mobile Service	Configuration
Campaign Bulletin		44 - High Voltage System	Cannot Perform	All
Model	Model Year	Country/Region	Build Location	
Model Y	2023 - 2024	Europe, Middle East, Africa	Giga Berlin	

The model(s) and model year(s) listed are a general approximation of the affected VIN list. Refer to the VIN/Bulletin Tracker or Customer/Vehicle profile to determine applicability of this bulletin for a particular vehicle.

**Campaign Bulletin:** This campaign bulletin addresses a non-safety-related condition and provides recommended technical diagnosis and repair procedures. Apply this procedure to the applicable vehicles.

## Condition

On certain Model Y vehicles built at Giga Berlin, an incorrect alignment offset between the charge port door trim and the charge port inlet may prevent latching of certain charge handles, which can reduce or inhibit charging.

## Correction

Inspect the vehicle by measuring the charge port door offset. If symptoms are present, remove the charge port and adjust the charge port door mounting points on the body of the vehicle.

Correction Description	Correction	Time
SB-24-44-001 Not Applicable	S012444001	0.00
Inspect Charge Port, No Repairs Needed	S022444001	0.06
Inspect and Adjust Charge Port	S032444001	1.02

	Part Number	Description	Quantity
<b>Parts Required</b>	1453382-00-A	M3 BODYSIDE LAMP CONNECTOR GASKET	1
	1453381-00-A	M3 BODYSIDE LAMP T-STUD GASKET	2
<b>Special Tools</b>	1082501-00-A	DIGITAL CALIPERS 6IN	
	1536089-00-A	CHARGE PORT DOOR OVERFLUSH TOOL	
	1115199-00-A	DEAD BLOW HAMMER	
	1061138-00-A	HV BATTERY HANDLES	

 **NOTE: If 1536089-00-A is not available, use:**

These part numbers were current at the time of publication. Use the revisions listed or later, unless otherwise specified in the [Parts Catalog](#).

**Shop Supplies** IPA Wipes  
Masking tape

## Inspection

1. Open the charge port door.
2. Insert a digital caliper next to the LH side of the Type 2 charging inlet near the location of the latch pin, which is horizontally aligned with the top three AC connectors of the charge port (Figures 1 and 2).

**⚠ CAUTION:** To prevent damage to the charge port, do not insert the caliper into one of the pin sockets.

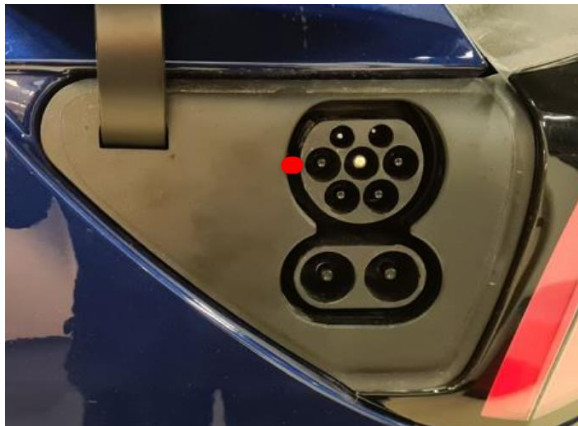


Figure 1 – Measurement location in red

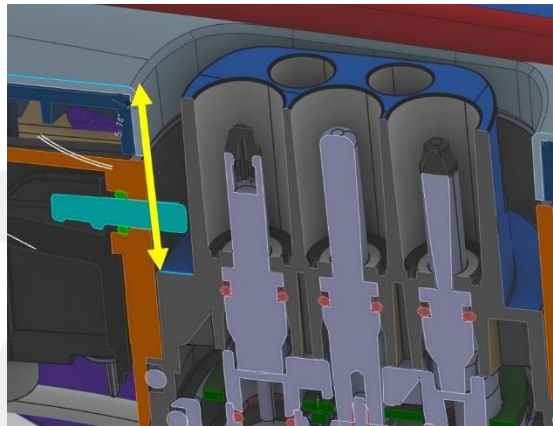


Figure 2 – Distance to be measured

3. Measure the distance between the charge port faceplate and the bottom of the charge port inlet (Figures 3 and 4).



Figure 3

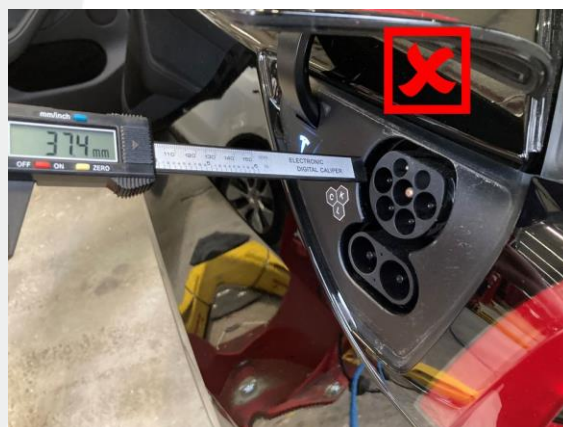


Figure 4

- If the distance is more than 35.80 mm, subtract 35.80 mm from the measured distance and note the required adjustment, and then proceed with the section [Adjust Charge Port](#).
- If the distance is less than 35.80 mm, no rework is needed. Discontinue this procedure and use correction code S022444001.

## Adjust Charge Port

**⚠ CAUTION:** Only perform small adjustments, and repeat the adjustment steps if necessary, to make sure the distance between the charge port faceplate and the bottom of the charge port is 35.50 mm +/- 0.25 mm. If the distance is below 35.25 mm the charge port door may damage the body and no longer move freely.

1. Remove the charge port and the charge port door assembly (refer to Service Manual procedure [44015302](#)).
2. Apply protective tape to the upper edge of the LH rear quarter panel where the charge port door is mounted to the vehicle (Figure 5).

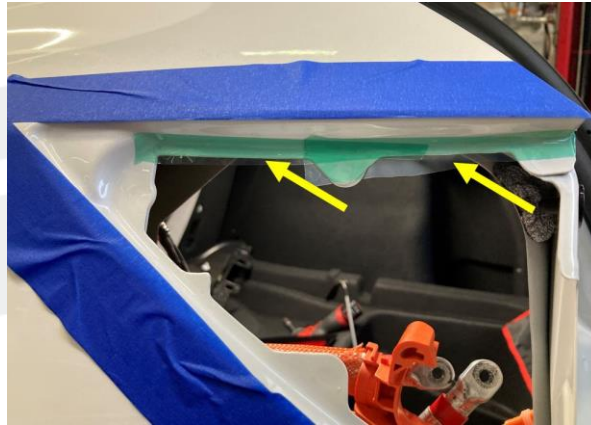


Figure 5

3. Move the busbar aside and temporarily install the charge port to the vehicle, and then install the bolts (x3, 10mm, Torque 5.5 Nm) that attach the charge port to the body (Figures 5 and 6).

**NOTE:** Do not reconnect any electrical connectors.

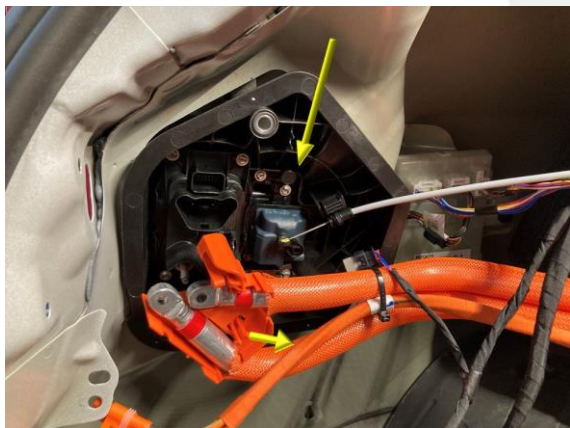


Figure 6

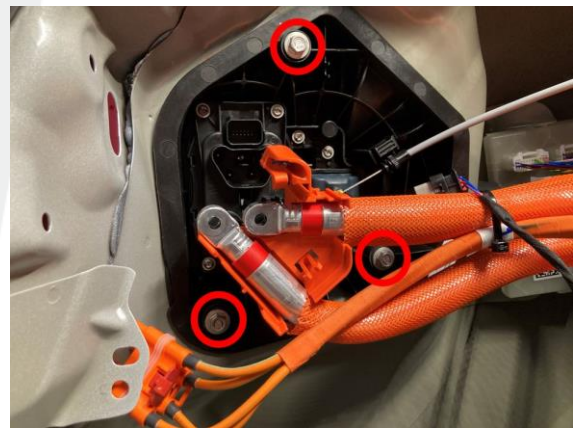



Figure 7

4. Measure the distance between the metal edge of the quarter panel and the charge port assembly at three locations, and then note the measured values (Figure 8).

 **NOTE:** Mark the locations on the masking tape for future reference.



**Figure 8**

5. Calculate the required distance adjustment for the three measurement points: for every 1 mm of charge port door adjustment that was determined during the inspection, the distance between the metal edge and the charge port assembly needs to be reduced by 1.25 mm (Table 1).

<b>Charge port door offset:</b>			
Measured during inspection	37.10		
Required distance	35.50		
Required adjustment	<b>1.60</b>		
Adjustment on metal body (* 1,25)	2.00		
<b>Charge port to body:</b>	<i>Point 1</i>	<i>Point 2</i>	<i>Point 3</i>
Measured distance	37.00	35.10	19.10
Required adjustment	2.00	2.00	2.00
Distance after rectification	<b>35.00</b>	<b>33.10</b>	<b>17.10</b>

**Table 1 – Values are an example**

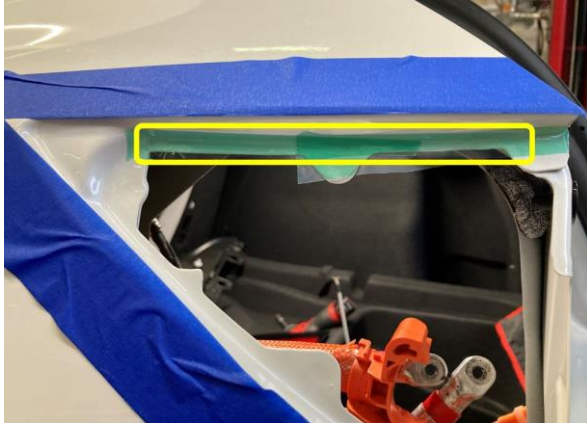
6. Loosen the bolts (x3, 10 mm) that attach the charge port assembly to the vehicle, and then remove the charge port from the vehicle (Figures 6 and 7).



- Using the charge port door over flush tool, carefully adjust the full width of the upper edge of the LH rear quarter inwards (Figures 9 and 10).

**⚠ CAUTION:** Make sure not to damage the surrounding panel.

**📖 NOTE:** Use a dead blow hammer and an HV battery handle if the charge port door over flush tool is unavailable.



**Figure 9 – Adjust full width of upper edge**



**Figure 10**

- Move the busbar aside and temporarily install the charge port to the vehicle, and then install the bolts (x3, 10mm, Torque 5.5 Nm) that attach the charge port to the body (Figures 5 and 6).

- Measure the distance between the metal edge of the quarter panel and the charge port assembly at the three locations that were marked in step 4 (Figure 8).

- If the distance is reduced to the required values that were calculated in step 5, continue with the next steps.
- If the distance is not reduced to the required values, repeat steps 6–9 of this procedure.

- Install the charge port door assembly, position the charge port on the vehicle, and then install the bolts that attach the charge port to the vehicle (refer to installation steps 1–6 of Service Manual procedure [44015302](#)).

**📖 NOTE:** The remainder of the installation procedure is to be performed after verification of the adjustment.

- Verify that the rework on the charge port is successful by repeating the inspection.

- Insert a digital caliper on the LH side of the Type 2 charging inlet at the location of the latch pin, which is horizontally aligned with the top three AC connectors of the charge port (Figures 1 and 2).

**⚠ CAUTION:** To prevent damage to the charge port, do not insert the caliper into one of the pin sockets.

- Measure the distance between the charge port faceplate and the bottom of the charge port inlet (Figures 3 and 4).

- If the distance is more than 35.80 mm, repeat the adjustment procedure
- If the distance is less than 35.80 mm, the rework was successful. Proceed with the next steps.

- Proceed with the installation of the charge port (refer to installation steps 7–24 of Service Manual procedure [44015302](#)).

**📖 NOTE:** Ignore step 25 of the Service Manual procedure because the same charge port door assembly is to be reinstalled.

- Close out this document using correction code S032444001.