



Tesla, Inc.
Service Bulletin

Rework Windshield Camera Fan

SB-24-10-006
June 26, 2024

Classification		Section/Group	Mobile Service	Configuration
Repair Bulletin		10 - Body	Can Perform (where permitted)	All
Model	Model Year	Country/Region	Build Location	
Cybertruck	2024	United States	Giga Texas	

The model(s) and model year(s) listed are a general approximation of the affected VIN list. Refer to the VIN/Bulletin Tracker or Customer/Vehicle profile to determine applicability of this bulletin for a particular vehicle.

Repair Bulletin: This repair bulletin provides instructions on addressing a possible customer concern regarding the operation of Tesla vehicles. These instructions should only be performed by trained professionals.

Condition

On some Cybertruck vehicles, the windshield camera fan mounting bracket does not meet Tesla specifications and might cause the windshield camera fan to emit a buzzing or rattling noise.

Correction

Upon customer complaint, install shims on the windshield camera fan, and then test the fan. If the noise persists, replace the windshield camera fan.

Correction Description	Correction	Time
SB-24-10-006 Not Applicable	S012410006	0.00
Rework Windshield Camera Fan And Test Fan; Fan Replacement Not Necessary	S022410006	0.30
Rework Windshield Camera Fan And Test Fan; Replace Fan	S032410006	0.42

	Part Number	Description	Quantity
Parts Required	1893751-00-A	CAMERA FAN SHIM	3 or 6
If Necessary	1811670-00-D	WINDSHIELD - CAMERA FAN	1

These part numbers were current at the time of publication. Use the revisions listed or later, unless otherwise specified in the [Parts Catalog](#).

Procedure

- On the vehicle touchscreen, touch **Controls** (vehicle icon) > **Software**, and then scroll down to display the vehicle software version.
 - If the vehicle is operating with software version 2024.14 or later, skip to step 2.
 - If the vehicle is operating with a software version earlier than 2024.14, update the software to version 2024.14 or later, and then continue to step 2 (refer to Service Manual procedure [00020003](#)).
- Remove the windshield camera fan (refer to Service Manual procedure [1722037032](#)).

3. Position the adhesive side of the camera fan shims (x3) on the windshield camera fan (Figure 1).

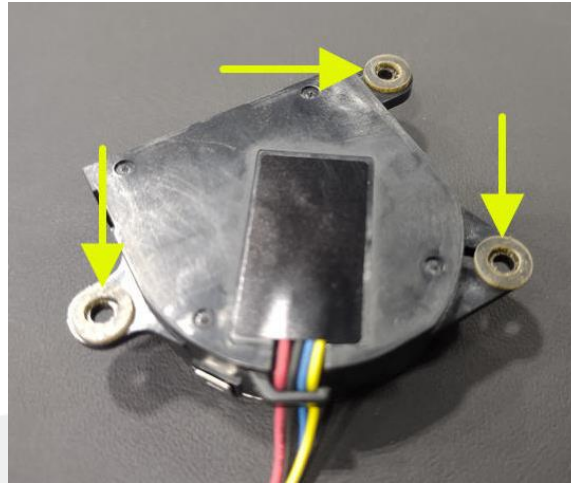


Figure 1

4. Refer to Service Manual procedure [1722037032](#) to perform the following:
 - a. Position the windshield camera fan in the vehicle.
 - b. Install the screws (x3) that attach the windshield camera fan to the vehicle.
 - c. Route and clip (x1) the electrical harness on the rear view mirror beauty cover, and then connect the electrical harnesses (x3).
5. Let the rear view mirror beauty cover hang from the electrical harness (Figure 2).

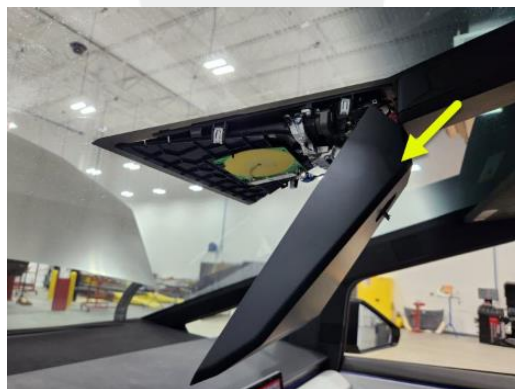


Figure 2

6. Connect a laptop with Toolbox 3 to the vehicle (refer to the Service Manual [procedure](#)).
7. In Toolbox, click **Actions**, and then search for and run the “DAS Enter Calibration Mode” routine (Figure 3).

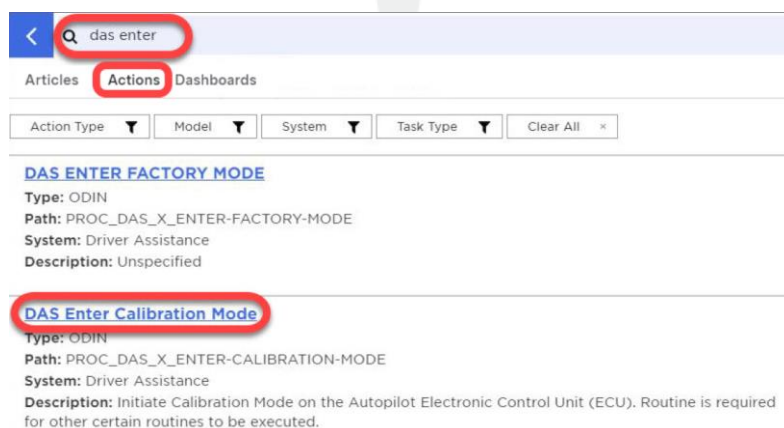


Figure 3

8. In the **Actions** section, search for and run the “Camera Fan Test” routine (Figure 4).

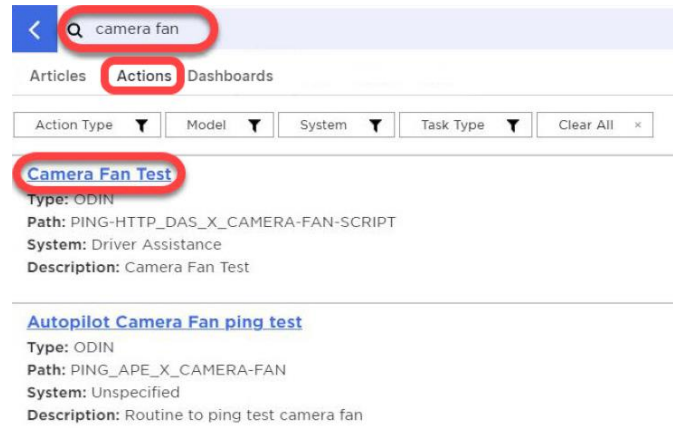


Figure 4

9. When prompted, set “fan_on_duration” to “60”, and then click **Run** (Figure 5).

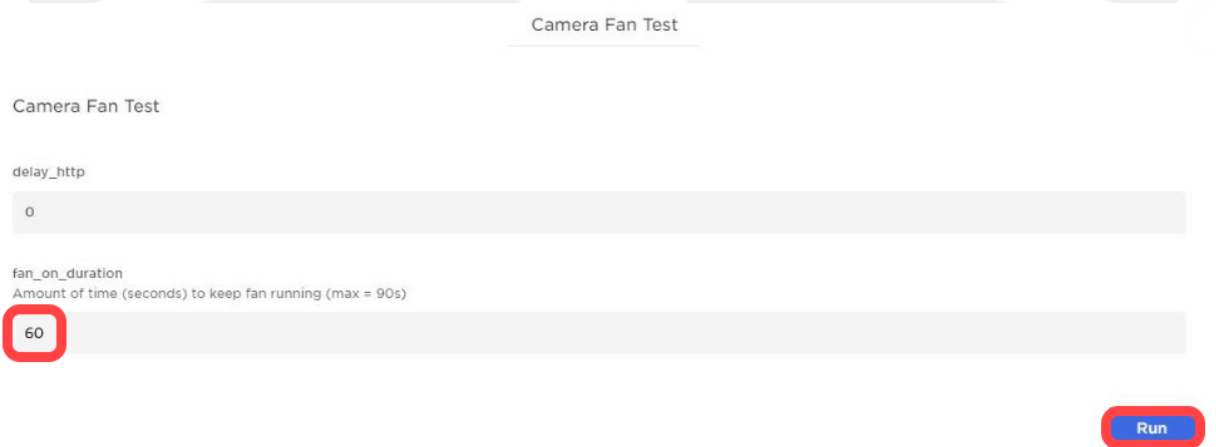


Figure 5

10. The fan test will run for 60 seconds. During this test, monitor the windshield camera fan for noises in excess of the fan’s normal operating noises.

- If excessive fan noise is observed, perform the following sub-steps, referring to Service Manual procedure [1722037032](#) as necessary:
 - a. Remove and discard the windshield camera fan.
 - b. Position new camera fan shims (x3) on a new windshield camera fan (refer to step 3 of this procedure) and install the fan on the vehicle.
 - c. Run the “Camera Fan Test” as instructed in steps 7–9 of this procedure to ensure proper installation and operation of the replacement camera fan.
 - d. Disconnect the laptop from the vehicle.
 - e. Reinstall all parts that were removed for access.
 - f. Discontinue this procedure and use correction code S032410006.
- If excessive fan noise is not observed:
 - a. Disconnect the laptop from the vehicle.
 - b. Reinstall all parts that were removed for access (refer to Service Manual procedure [1722037032](#)).
 - c. Discontinue this procedure and use correction code S022410006.